

2023  
Citizens Academy  
Tyrone 101 - Finance



# Finance Functions

- Calendar Year-End (Jan 1 – Dec 31)
  - ❖ Employee Benefits Open Enrollment  
(End of Nov / Payroll Changes in Dec / Effective in Jan)
  - ❖ W-2s (Jan)
  - ❖ 1099s (Jan)
- Fiscal Year-End (Jul 1 – Jun 30)
  - ❖ Budgets (Mar – Jun)
  - ❖ Preliminary Audit (Usually the End of Jul)
  - ❖ Millage (Aug)
  - ❖ Audit (Usually Sept or Beginning of Oct)



# Additional Finance Functions

- Accounts Payable (Every Other Week)
- Payroll Processing (Every Other Week)
- Town of Tyrone Insurance and Worker's Compensation
- Capital Expenditures and Town Projects
- Bank Reconciliations (6 Bank Accounts)
- Maintain 13 Funds and the Downtown Development Authority
- Security and Controls for Fraud Prevention
- Journal Entries
- Multiple Finance & H/R Annual Surveys, Reports & Open Records Requests
- Human Resources Functions

# Revenue Type

	FY 22/23	%
Local Option Sales Tax (LOST)	\$2,185,610.99	32.2%
Property Taxes	\$1,686,351.72	24.9%
Business Occupational Taxes & Insurance/Financial Institution Tax	\$765,392.90	11.3%
Franchise Taxes	\$672,704.37	9.9%
Vehicle Taxes	\$433,835.76	6.4%
Reimbursement for Damaged Property (Insurance)	\$225,116.69	3.3%
Interest Revenues	\$207,418.19	3.1%
Municipal Court Fines	\$138,978.10	2.0%
Street Resurfacing State Grant	\$122,881.44	1.8%
Alcohol Excise Taxes & Licensing	\$103,142.59	1.5%
Licenses & Permits	\$87,973.88	1.3%
Contributions & Donations	\$42,091.35	0.6%
Miscellaneous Fees	\$29,328.06	0.4%
Local Government Grants	\$26,528.12	0.4%
Rents & Royalties	\$19,163.52	0.3%
Intangible Taxes	\$18,004.11	0.3%
Real Estate Transfer Taxes	\$9,141.05	0.1%
Miscellaneous Sales of Items, Fed Govt Operating Grants & Personal Property Tax	\$11,948.18	0.2%

# Tax Percentages

Type of Tax	Average of All 50 States	State of Georgia Average	Town of Tyrone
Property Tax	61.0%	58.6%	29.2%
Sales Tax	16.3%	19.7%	37.9%
Individual Income Tax	6.8%	0.0%	0.0%
Other Tax	15.8%	21.7%	32.9%

# Public Works Funding Sources

- ▶ Local Maintenance Improvement Grant (LMIG)
  - ❖ For road maintenance only in Town owned Rights-of-way
  - ❖ 70/30 grant from GDOT
  - ❖ Based on miles of road owned by the Town
  - ❖ Approximately \$120,000 per year
- State Transportation Improvement Program (STIP)
  - Local Assistance Program (LAP)
    - ❖ 80/20 grant from GDOT
    - ❖ Applies to higher volume roads in the Town that meet certain GDOT classifications. Can also apply to Local Community Initiative (LCI) projects
    - ❖ Recently completed: Tyrone Road – Upcoming: Dogwood Trail
- ❖ SPLOST and General Fund
  - ❖ Used for Capital Improvement Projects (CIP) and general maintenance. Recent SPLOST CIP's - Briarwood Rd & Farr Rd



**Public  
Works**

# Other Grants and Revenue

- ▶ ARPA (American Rescue Plan Act) also known as the SLFRF (State and Local Fiscal Recovery Funds)
- ▶ SPLOST (Special Local Option Sales Tax)
- ▶ Applied for a Grant for Pendleton Dam
- ▶ Applied for a Grant for Castle Lake Dam
- ▶ LCI (Livable Centers Initiative) from ARC (Atlanta Regional Comm)
- ▶ Bullet Proof Vest Grant (50% of Vest)
- ▶ Recreation Grant from Fayette County GA
- ▶ Safety Grant from GIRMA (GA Interlocal Risk Mgmt Agency)



# Millage Rate

A millage rate is the amount of tax payable per dollar of the assessed value of property. The millage rate is based on “mills,” which is a figure that represents the amount per \$1,000 of the assessed value of the property, and is used to calculate the amount of property tax.

The millage rate for a property is charged by different agencies (in Tyrone it includes the Town of Tyrone, Fayette County, and Fayette County Schools), therefore each agency may charge a different millage rate.

# Calculating Property Tax Example

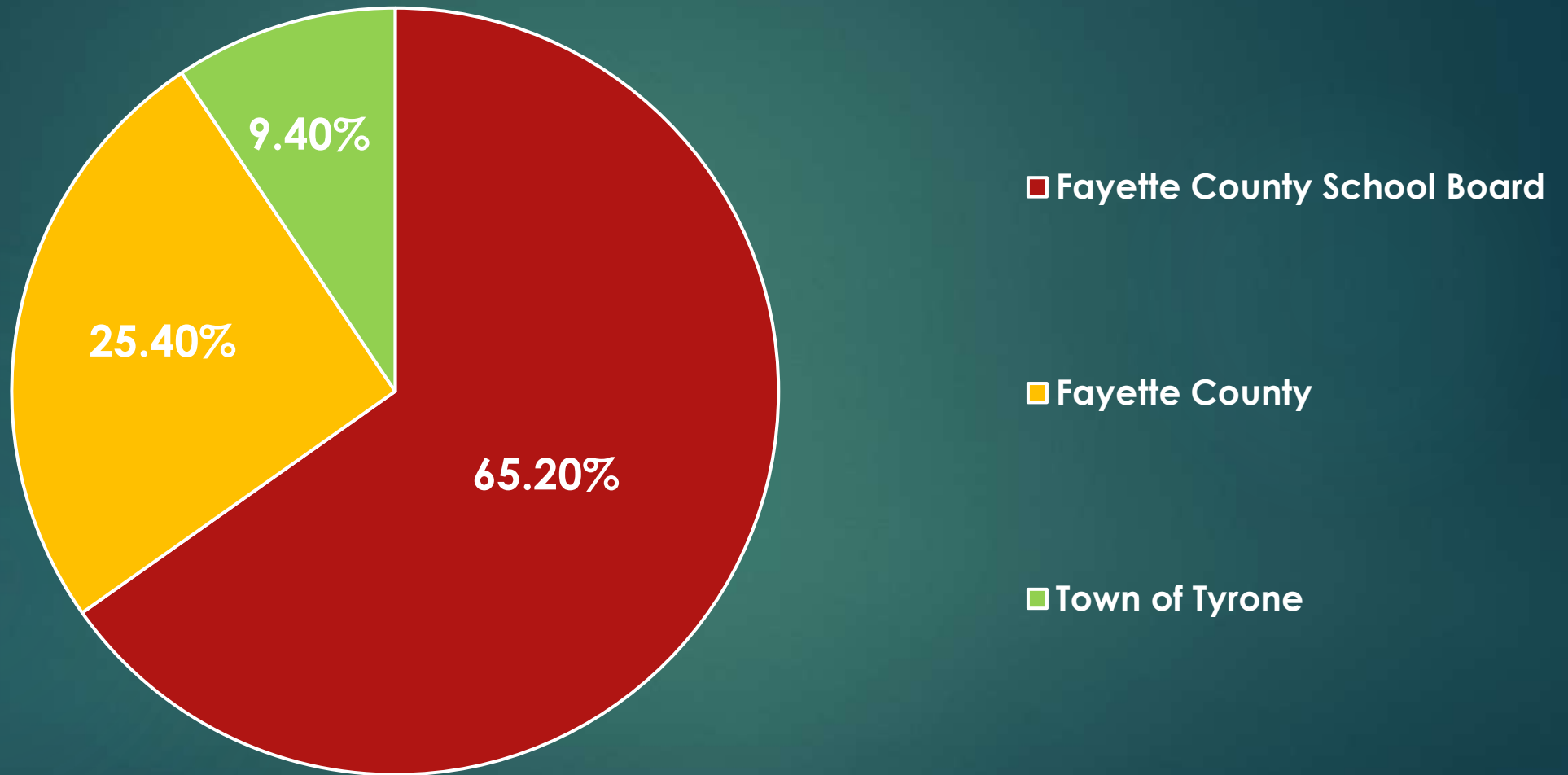
Homestead Value \$450,000

Using A \$2,000 Homestead Exemption

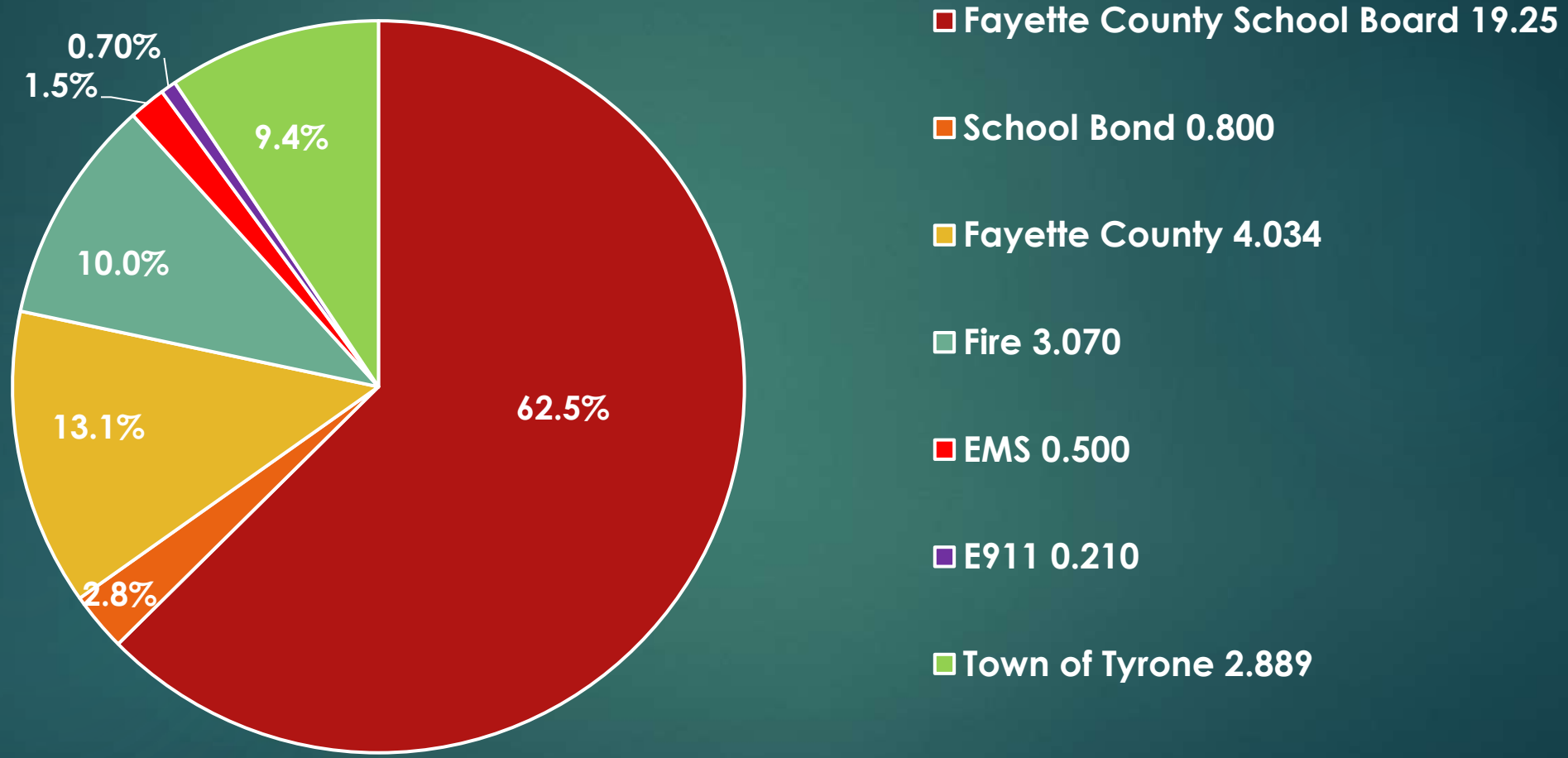
\$450,000.00	Assessed Value By Fayette County Assessor's Office
X      40%	
\$180,000.00	
-   \$2,000.00	Homestead Exemption
\$178,000.00	
X    .002889	Town of Tyrone Millage Rate for the Last 16 Years (2.889)
\$514.24	Would be the Amount Paid to the Town of Tyrone



## 2023 Millage Rate & Property Tax Distribution for Town of Tyrone Property



# 2023 Millage Rate & Property Tax Distribution for Town of Tyrone Property



# Ways To Lower Your Property Taxes

- ▶ **Review your property tax card from Fayette County:** Make sure the information is accurate and up-to-date. If you find any errors, contact the County Assessor's Office to have them correct it.
- ▶ **Challenge your home assessment:** If you believe your home has been overvalued, you can challenge the assessment.
- ▶ **Compare with neighbors and similar homes:** Look at the assessed values of similar homes in your area to see if they are being taxed at a lower rate than yours. If you find discrepancies, you can appeal your assessment.
- ▶ **Look for local and state exemptions:** There are exemptions for certain groups of people, such as veterans or senior citizens.
- ▶ **Appeal your tax bill:** If you believe that your property tax bill is incorrect, you can appeal it.
- ▶ **Talk to the elected officials of each taxing municipality:** If the Fayette County School Board, the Fayette County Board of Commissioners, or the Town of Tyrone Town Council is planning on collecting more taxes than the prior year, they must hold 3 public hearings on the millage rate. You have the right to talk at all three places.

# Some Town of Tyrone Millage Rate History

Years	Millage Rate
2008 – 2023	2.889
2005 – 2007	2.900
1985	0.500
1984	2.000
1983	4.000
1982	4.500
1979	3.500
1968	3.000
1954	5.000



2023 Municipality Millage Rates				
Municipality	Millage Rate	Population Estimate	Square Miles	Based On Assessed Value of \$450,000 Tax Bill With Exemptions Below
City of Brooks	1.207	572	4.4	\$214.85
City of Sharpsburg	1.846	333	0.6	\$328.59
City of Newnan	2.752	44,575	18.6	\$489.86
Town of Tyrone	2.889	8,019	12.9	\$514.24
City of Senoia	4.587	5,761	5.4	\$816.49
City of Grantville	5.228	3,133	5.6	\$930.58
City of Fayetteville	5.646	19,960	13.0	\$1,004.99
City of Peachtree City	6.043	39,790	25.4	\$1,075.65
City of Fairburn	8.100	16,651	17.1	\$1,441.80
City of Palmetto - 2022	8.500	5,047	5.3	\$1,513.00
City of Chattahoochee Hills	9.000	3,325	59.3	\$1,602.00
City of South Fulton	12.399	105,551	85.2	\$2,207.02
Fayette County (Just M&O)	4.034	122,983	199.0	\$705.95
Fayette County (Fire)	3.070			\$537.25
Fayette County (EMS)	0.500			\$87.50
Fayette County (E911)	0.210			\$36.75
Coweta County (Just M&O)	4.688	151,810	443.0	\$820.40
Fulton County (Just M&O)	8.870	1,110,549	526.7	\$1,552.25
Coweta County Schools	15.410			
Fayette County Schools M&O	19.250			
Fayette County School Bond	0.800			

# Very Large Millage Rates

## Municipality

## Millage Rate

- |                                 |                          |
|---------------------------------|--------------------------|
| 1. Ecorse, Michigan             | 111.000 to 111.500 mills |
| 2. Harper Woods, Michigan       | 83.100 to 81.900 mills   |
| 3. River Rouge, Michigan        | 82.000 mills             |
| 4. Myrtle Beach, South Carolina | 78.900 to 83.500 mills   |
| 5. Highland Park, Illinois      | 78.400 mills             |
| 6. Inkster, Michigan            | 64.100 to 77.100 mills   |
| 7. Center Line, Michigan        | 65.300 to 77.200 mills   |
| 8. Hazel Park, Michigan         | 74.600 mills             |
| 9. Royal Oak Township, Michigan | 73.600 to 74.400 mills   |



# Public Works Sewer & Utilities

SCOTT LANGFORD



**Public  
Works**



# Sewer

IT'S A DIRTY JOB, BUT SOMEONE HAS TO DO IT.

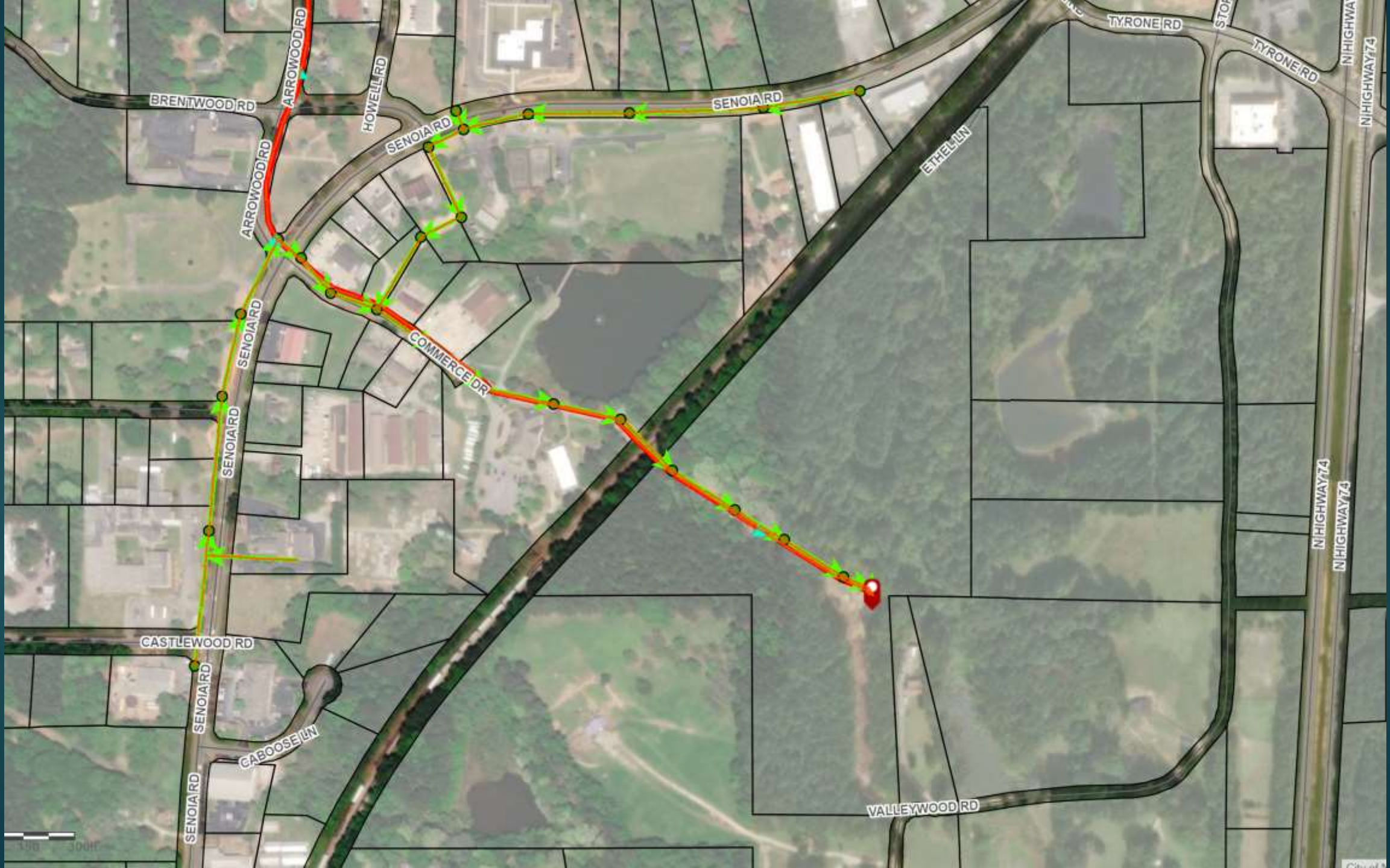


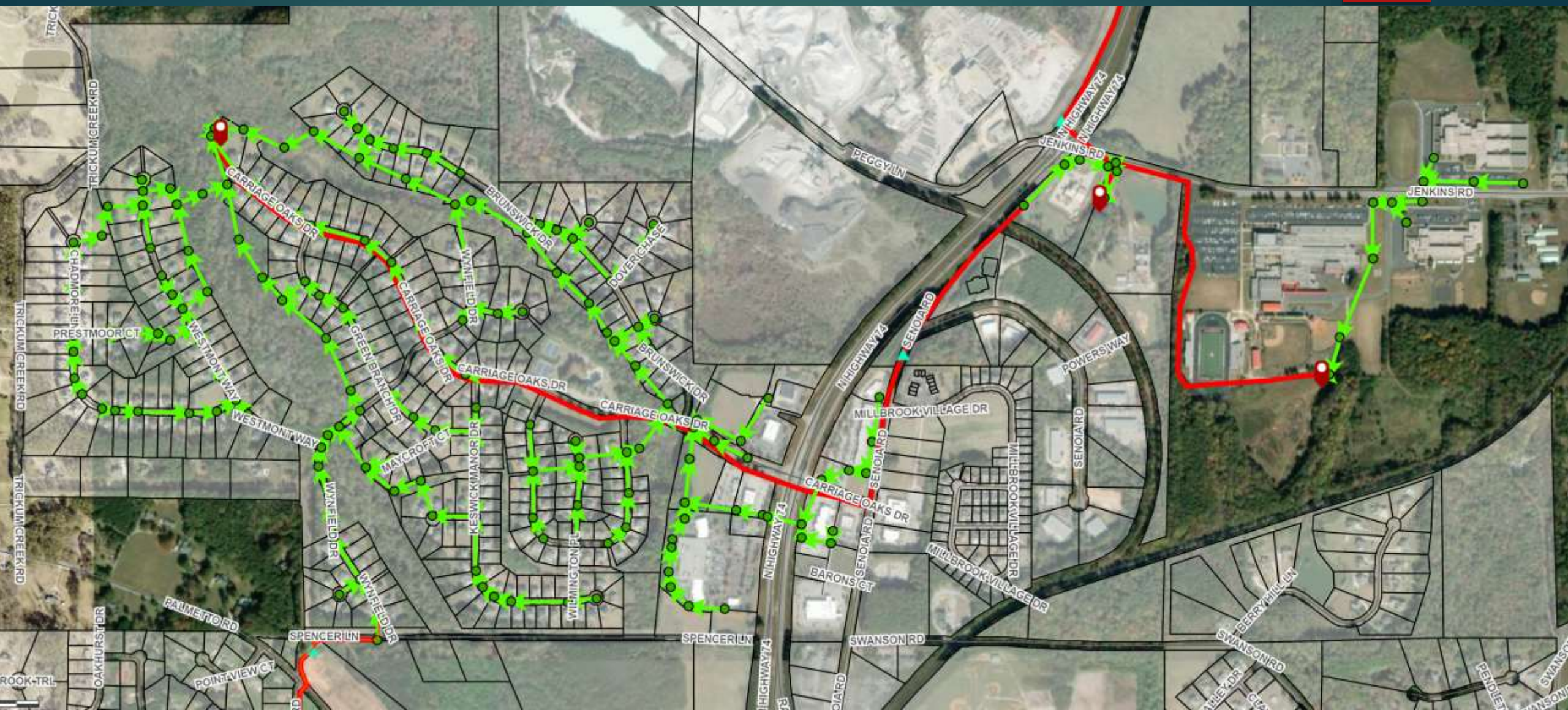
**Public  
Works**

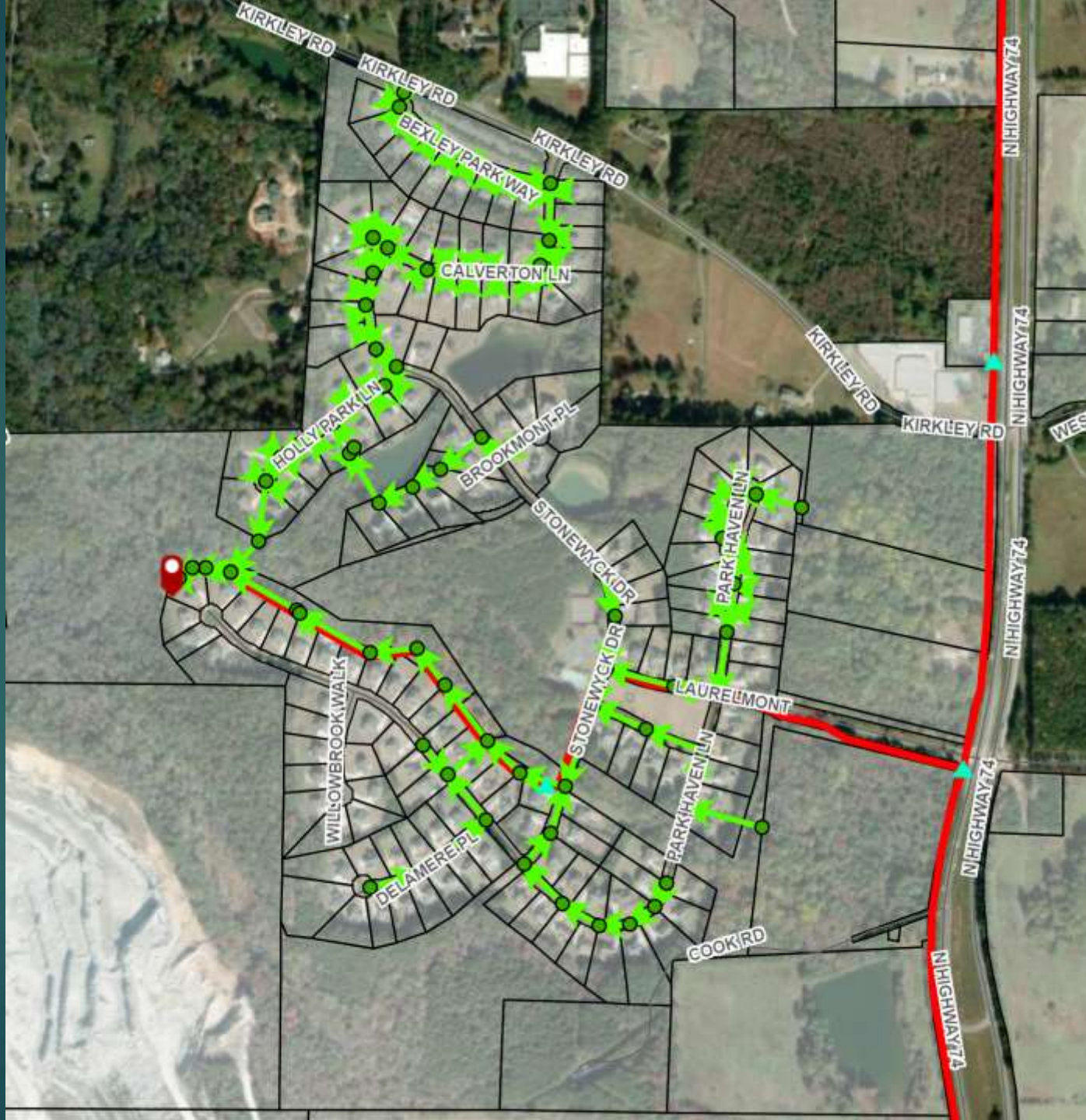
# Sewerage System

1. Funded by the Sewer Enterprise Fund and sometimes by SPLOST.
2. The Town collects wastewater from Southampton Subdivision and the Shops at Southampton, River Crest Subdivision, the 3 Schools along Jenkins Road, and a portion of the downtown area (Senoia Road from Castlewood Rd to the Partners Pizza area and along Commerce Drive)
3. Sewage is collected in a gravity system that flows to one of the five lift stations in town. Each lift station is equipped with a pump, control panel, generator and a communication system (SCADA) that helps keep track of the system status and any potential issues with the pump station. Coweta County WASA assists the Town with maintenance and operations of the lift stations. From the lift stations, sewage is eventually pumped to the Fulton County Camp Creek wastewater treatment facility for treatment and discharge.
4. The Town buys capacity from Fulton County and Fairburn. This capacity limits the Town to how much sewer service it can provide. Capacity purchase is very expensive and take a long time to acquire.
5. The sewer line that runs from your home to the edge of your property is called a service line. The service line is the property owner's responsibility to maintain.







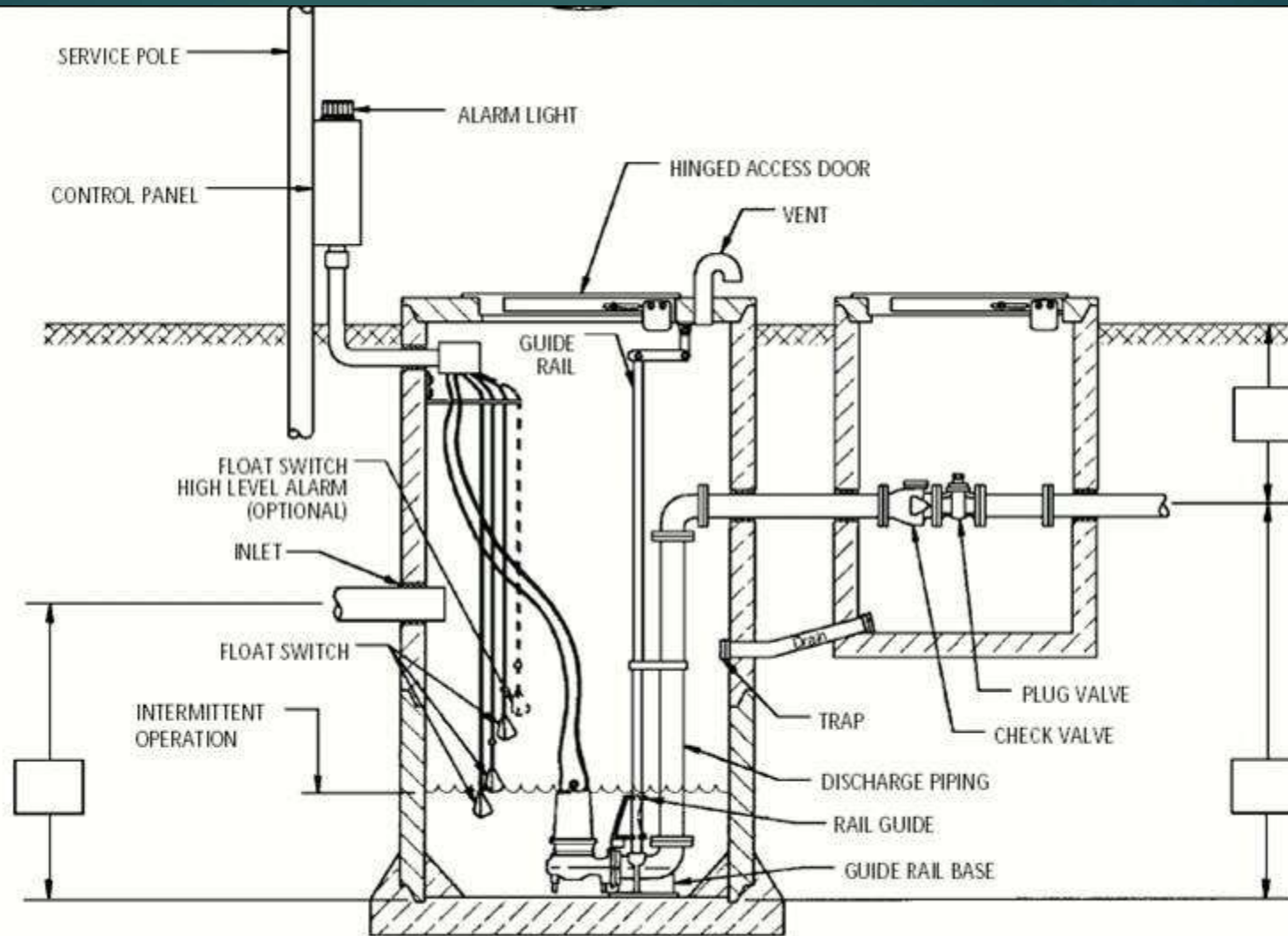


# TRANSPORTATION

ROADS – SIDEWALKS - MULTI-USE PATHS



**Public  
Works**



# Sewer Rates

- ▶ Sewer Rates are based off the amount of water you use as determined by the water meter provided by Fayette County Water System.
- ▶ Even though water is not always going down your drain into the system such as filling a swimming pool or a leak, that does not change your rate calculation with the Town. Fulton County does not provide a rate forgiveness to the Town.
- ▶ Sewer Rates will increase in proportion to the Town's sewer rate increase by Fulton County.



**Public  
Works**

# How to reduce your sewer bill to the Town

- ▶ Make sure you do not have leaks. Dripping faucets and leaking toilets can increase your bill more than you think.
- ▶ Use low flow toilets and sink aerators.
- ▶ Don't over water your lawns. Talk with your local landscaping company about how much water your landscaping needs each week. Over watering your grass will increase your water and sewer bills and may cause fungus and other issues with the health of your grass.
- ▶ Talk with your water supplier about the cost of putting your irrigation system on a separate meter. This does not always save you money unless you water a lot.



**Public  
Works**

# Sewer Maintenance Costs

- ▶ Sewer costs goes up quickly when you have clogs in your system. You own the sewer service line going from your home/business to the Town's right-of-way. Often fats, oils and grease (FOG) can collect in your line and choke down your flow until it clogs.
- ▶ In addition, tree and shrub roots get into the system. Roots catch FOG and solids until it clogs the line.
- ▶ Wipes are another major problem with clogs. If you need to use packaged wipes, make sure they are flushable. If not, the wipes will remain strong and not give way in your plumbing. These wipes can also clog lift station pumps which costs tens of thousands of dollars. This additional cost could mean increases to your rates.







# Utilities

In an emergency, always call 911 first.

- ▶ Sewer – Town of Tyrone
- ▶ Septic System – Fayette County Public Health Department
- ▶ Electrical Power – Coweta Fayette EMC or Georgia Power
- ▶ Gas – Atlanta Gas and Light (AGL)
- ▶ Large Gas Main - Williams Gas Pipeline Transco (3-year mowing cycle)
- ▶ Water – Fayette County Water System
- ▶ Solid Waste/Garbage – AmWaste
- ▶ Streetlights – Coweta Fayette EMC or Town of Tyrone or Private
- ▶ Railroad – CSX
- ▶ SR-74 – GDOT for road issue, signage, or traffic signals, dead animals, etc.
- ▶ Underground Utility Locates – Call 811



**Public  
Works**

# Thank You

The Public Works Department appreciates your time and interest in allowing us to demonstrate some of the many things we do for you every day, of every week, of every year.

We are glad to answer any questions you may have.



**Public  
Works**