

# The Future of Shamrock Park

As part of the 2023 SPLOST, the Town has taken action on citizen's desire to revitalize the downtown area starting with Shamrock Park! Starting in 2024, the Town contracted with TSW consultants and their team of landscape architects and planners alongside a 10-member citizen steering committee to re-envision the park for future generations.

## Goals & Desires

- 01

Re-energize the park and Downtown
- 02

Improve the Park with quality amenities
- 03

Create remarkable places in the park worth visiting
- 04

Serve as a catalyst for future investment around the park
- 05

Create spaces for all citizens in all stages of life
- 06

Improve parking safety and access.
- 07

Improve lighting and beautification of landscape
- 08

Create better spaces for events and activities.

## GENERAL IMPROVEMENTS

- A

OPEN-AIR, MULTI-PURPOSE PAVILION (APPROX. 30' X 60') WITH SPECIALTY PAVER SURROUND
- B

EXISTING PICNIC PAVILION TO REMAIN.  
RENOVATE AND REFRESH
- C

EXISTING RESTROOMS TO REMAIN.  
TASTEFUL MURAL BY LOCAL ARTIST.
- D

EXISTING TENNIS/BALL COURTS TO REMAIN.  
NEW CUSTOM WIND SCREEN ON FENCE
- E

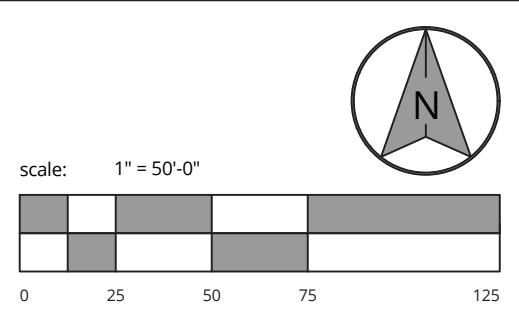
EXISTING PLAY EQUIPMENT TO REMAIN.  
REPLACE MULCH WITH RUBBERIZED PLAY SURFACE.
- F

EAST-WEST TRAIL CONNECTION TO  
COMMERCE DRIVE
- G

WETLAND/LITTORAL NATIVE PLANTINGS AS  
NEEDED AROUND LAKE FOR STABILIZATION
- H

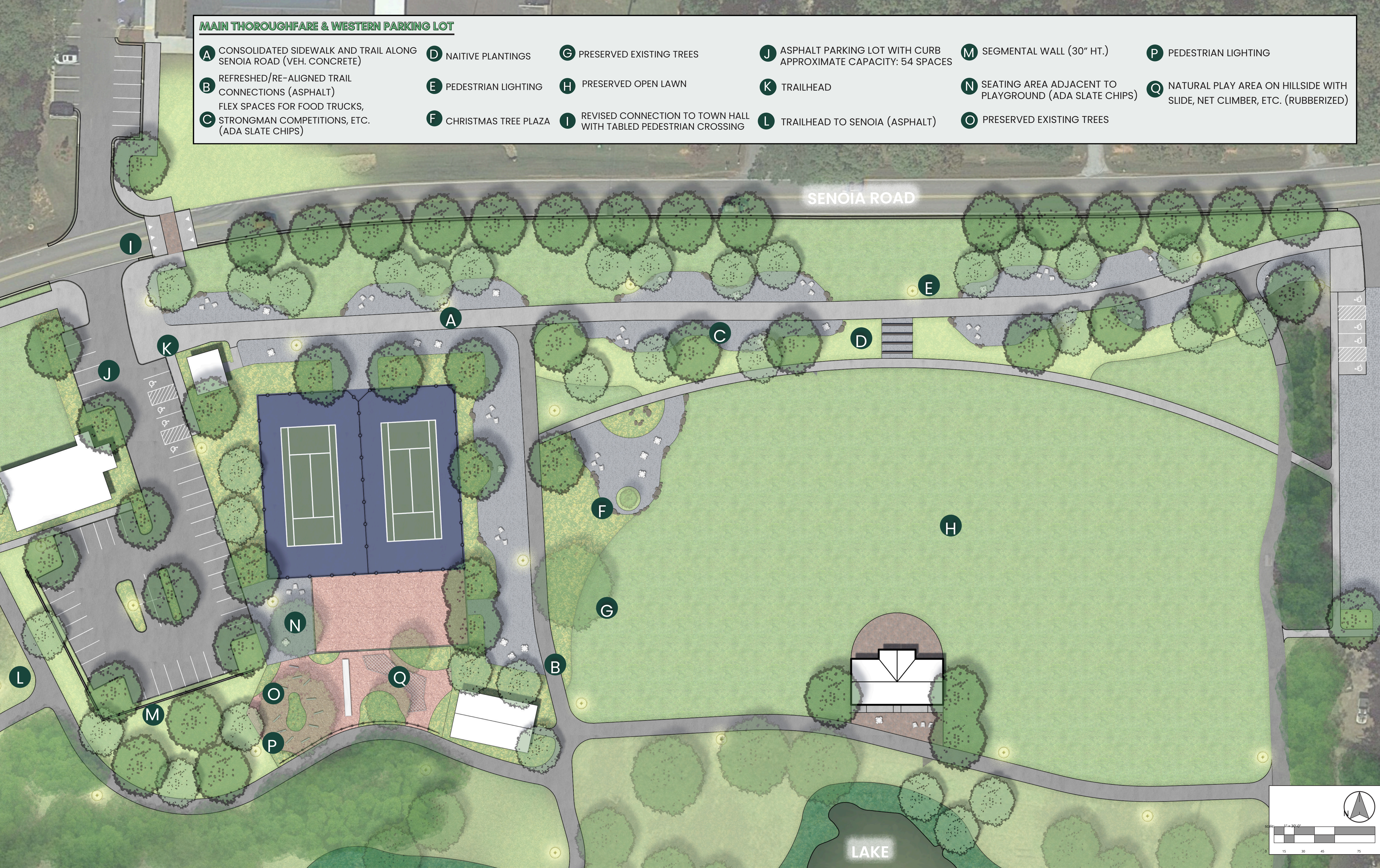
FISHING AREA. UTILIZE STABILIZED BANK AND ADD ADA SLATE CHIPS
- I

CONCRETE RAMP FOR LAKE MAINTENANCE



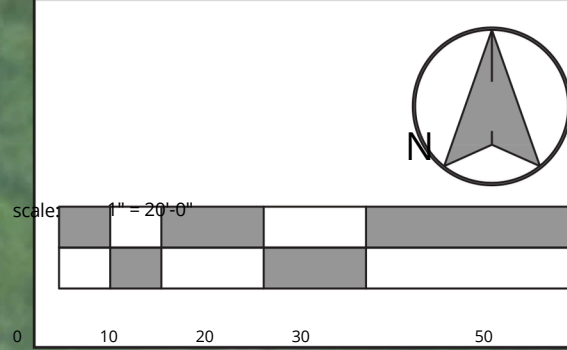
# MAIN THOROUGHFARE & WESTERN PARKING LOT

- |  |                               |  |  |  |   |
|--|-------------------------------|--|--|--|---|
| <b>A</b> CONSOLIDATED SIDEWALK AND TRAIL ALONG SENOIA ROAD (VEH. CONCRETE)   | <b>D</b> NAITIVE PLANTINGS    | <b>G</b> PRESERVED EXISTING TREES  | <b>J</b> ASPHALT PARKING LOT WITH CURB APPROXIMATE CAPACITY: 54 SPACES | <b>M</b> SEGMENTAL WALL (30" HT.)                              | <b>P</b> PEDESTRIAN LIGHTING  |
| <b>B</b> REFRESHED/RE-ALIGNED TRAIL CONNECTIONS (ASPHALT)<br>FLEX SPACES FOR FOOD TRUCKS, STRONGMAN COMPETITIONS, ETC. (ADA SLATE CHIPS) | <b>E</b> PEDESTRIAN LIGHTING  | <b>H</b> PRESERVED OPEN LAWN   | <b>K</b> TRAILHEAD   | <b>N</b> SEATING AREA ADJACENT TO PLAYGROUND (ADA SLATE CHIPS) | <b>Q</b> NATURAL PLAY AREA ON HILLSIDE WITH SLIDE, NET CLIMBER, ETC. (RUBBERIZED) |
| <b>C</b> STRONGMAN COMPETITIONS, ETC. (ADA SLATE CHIPS)  | <b>F</b> CHRISTMAS TREE PLAZA | <b>I</b> REVISED CONNECTION TO TOWN HALL WITH TABLED PEDESTRIAN CROSSING | <b>L</b> TRAILHEAD TO SENOIA (ASPHALT)                                 | <b>O</b> PRESERVED EXISTING TREES                              |   |



**LIBRARY SPACE**

- A** SEATING AREAS ADJACENT TO BUILDINGS & TRAIL (ADA SLATE CHIPS)
- B** OUTDOOR CLASSROOM WITH ARTIFICIAL TURF TERRACES, CONCRETE WALLS, AND STONE STEPS & ELECTRICAL
- C** PRESERVED EXISTING TREES
- D** PEDESTRIAN LIGHTING
- E** NEW FABRIX SHADE STRUCTURES OVER EXISTING PLAYGROUND
- F** MURAL ON EXISTING ELECTRICAL BOX (LOCAL ARTIST)
- G** ADA ACCESS TRAIL FROM ADA PARKING
- H** COVERED WALKWAY BETWEEN LIBRARY AND COMMUNITY CENTER
- I** FISHING AREA (ADA SLATE CHIPS). STABILIZE BANK WITH BOULDERS.







MAIN THOROUGHFARE AND FLEX PLAZAS

Final Concept Plan | February 2024 TSW



MAIN THOROUGHFARE AND FLEX PLAZAS

Final Concept Plan | February 2024 TSW



LAWN OVERVIEW

Final Concept Plan | February 2024 TSW



PAVILION AND STAGE

Final Concept Plan | February 2024 TSW



TYRONE  
PUBLIC  
LIBRARY

TYRONE  
COMMUNITY  
CENTER

Shamrock Park  
Final Concept Plan | February 2024



OUTDOOR CLASSROOM

Shamrock Park  
Final Concept Plan | February 2024



OUTDOOR CLASSROOM

Shamrock Park  
Final Concept Plan | February 2024



YOUR 2023 SPLOST  
DOLLARS AT WORK